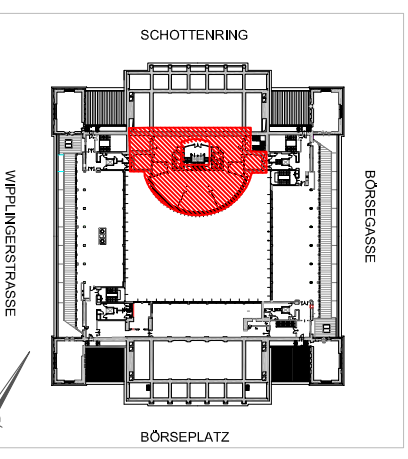
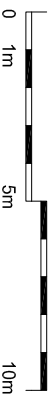
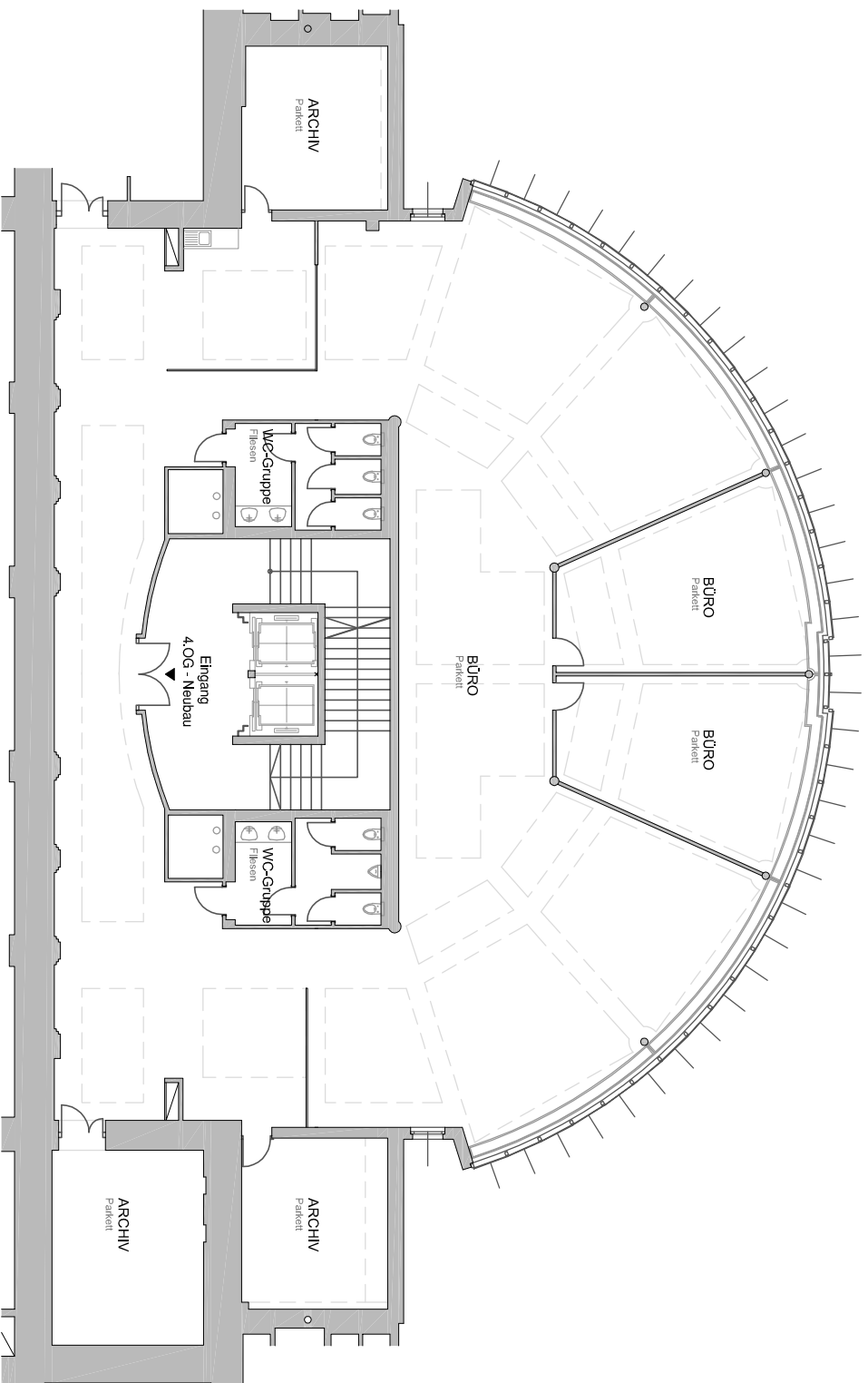


WIENER BÖRSEGEBÄUDE

A-1010 WIEN
WIPPLINGERSTRASSE 34

NEUBAU
4. OBERGESCHOSS
BÜRO ca. 517 m²



LAGEPLAN



RUSTLER GRUPPE

Lehrnergasse 3, A-1150 Wien - Tel. +43(0)1/8995 76 71, Fax DW 900

GEZ. KR

02.02.2011